



HIGH PRESSURE CLEANER

SIMPLE ASSEMBLY INSTRUCTIONS-PLEASE KEEP FOR FUTURE REFERENCE

DW-088BH



IMPORTANT

1. Read these instructions carefully and familiarize yourself with procedure before assembling the unit.
2. Check that you have all the component parts following the list on the back cover and familiarize yourself with each part before proceeding.
3. Take all the fittings out of the plastic bag and separate them into their groups.
4. Ensure you have enough space to lay all the parts before assembly.
5. To avoid scratching, it is recommended that you assemble the unit on a soft level surface.

WARNING: READ THE INSTRUCTION CAREFULLY BEFORE OPERATION

Shanghai dihoo Industrial Development Co.,Ltd.
Add:Qingpu District 3841 Huqingping highway (Shanghai)
Add:Ningbo Yinzhou District Qiyun Road No. 1000 (Ningbo)
Contacts:wang di
Tel:0086 13586526531
E-mail:dh@dihoo.cc
Website:www.nb-huaxun.com



SAFETY INSTRUCTION

- When using the high pressure cleaner, always observe the detailed safety instructions enclosed.
- We recommend the user wear safety equipment during use.
- Please read all instructions before use.

WARNING

DO NOT use your high pressure cleaner without reading the safety instruction manual.

- This unit must not be used by children or untrained personnel.
- When activating the high pressure of the water coming out of the lance may cause kick back. Therefore when activating, ensure that you grip the lance firmly. When using this unit ensure that other people are at least 10m away from the working area.
- High pressure cleaner can be dangerous if misused. The high pressure gun must not be directed at other people, animal, live electrical equipment or the high pressure cleaner itself.
- DO NOT point the high pressure gun towards yourself or other people.
If an extension cord is used, it must be of waterproof construction.
- To ensure safe operation of the high pressure cleaner use only original spare parts or spare parts recommended by the manufacturer.
- DO NOT use the high pressure cleaner if the supply cord or other important parts are damaged (e.g. high pressure hose or the lance).
- Keep the high pressure hose connected to the pressure cleaner as long as the pressure cleaner is under pressure. Disconnecting the high pressure hose whilst the system is under pressure is dangerous.
- DO NOT use any acid or flammable liquid in the machine.
It is highly recommended that this product be used with and RCD (Residual Current Device).
- When using a high pressure cleaner always ensure that your water connection is protected by a “ Backflow Preventer” (as per Water Byelaws). This will avoid any possible contamination of your water supply.

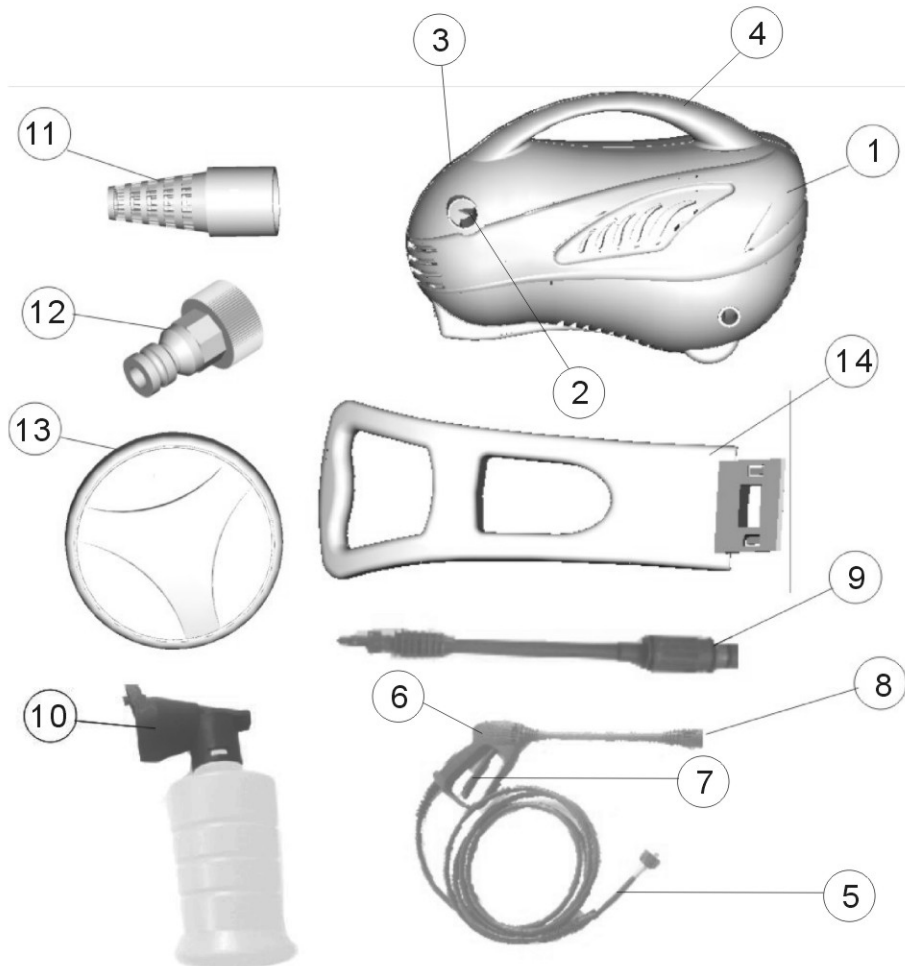
ELECTRICAL SAFETY

Always check that the power supply corresponds to the voltage on the rating plate. Preferably connect the machine to an electric group who is protected with an earth leakage switch of max. 30 mA.

KNOW YOUR MACHINE

TECHNICAL DATA

| | |
|---------------------------|----------------|
| VOLTAGE | 230V~240V/50Hz |
| MOTOR POWER | 1600W |
| WORK PRESSURE | 7.0Mpa |
| MAX. PRESSURE | 10.5Mpa |
| FLOW RATE | 6.0L/min |
| PROTECT CLASS | IPX5 |
| MAXIMUM WATER TEMPERATURE | 40°C |
| MOTOR TYPE | BRUSH |



Description/ The list

Note: Your high pressure cleaner has been designed for outdoor use only for the cleaning of stone, wood, metal and plastic materials.

1. MAIN SWITCH
2. THREADED CONNECTOR FOR HIGH PRESSURE HOSE
3. THREADED CONNECTOR FOR WATER SUPPLY (GARDEN HOSE AND CONNECTORS NOT INCLUDED)
4. HANDLE
5. HIGH PRESSURE HOSE
6. TRIGGER
7. SAFETY LOCK DEVICE
8. LANCE
9. NOZZLE
10. DETERGENT BOTTLE
11. WATER FILTER (INSIDE THE MACHINE)
12. THREADED MALE HOSE CONNECTOR
13. WHEEL
14. PULL HANDLE

OPERATION INSTRUCTION-ASSEMBLY

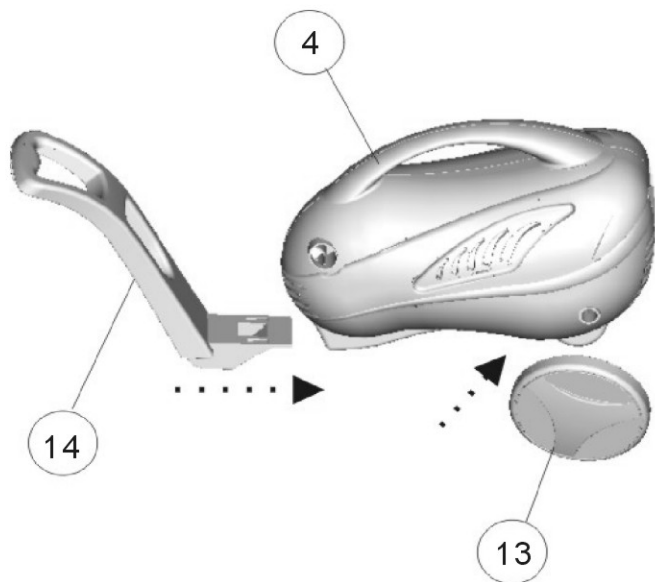
ATTENTION

Before carrying out any assembly or disassembly of the unit please ensure that the unit is unplugged from the electrical supply.

Assembling the wheel and pull handle

1. Locate the wheels and pull handle onto the high pressure cleaner. Ensure they are securely fitted.

See picture 1.

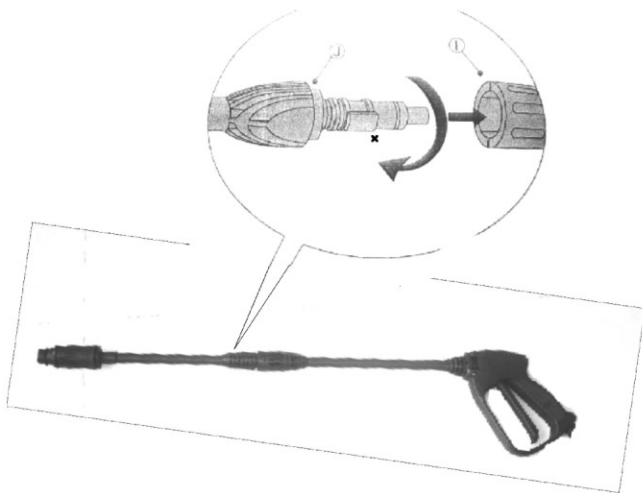


picture 1

Assembling the lance

1. Connect the lance and nozzle by pushing the bayonet on the nozzle into the socket of the lance and click into position (rotating clockwise until it locks in place). This assembly must be carried out prior to using the high pressure cleaner.

See picture 2.



picture 2

CAUTION

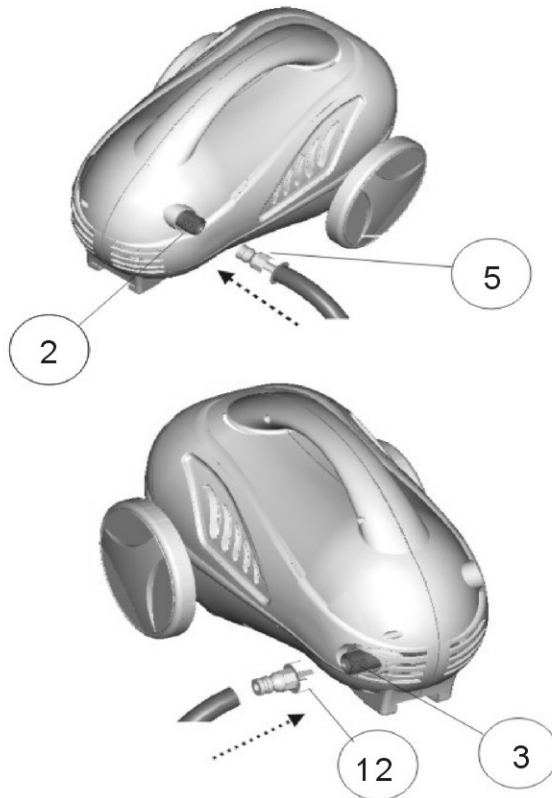
Ensure that both parts are firmly connected together otherwise the nozzle could fly off the lance and cause a hazard.

2. Always remove or replace parts whilst the high pressure cleaner is switched off.

Connecting the high pressure hose

1. Screw the fitting on high pressure hose onto the threaded connector for high pressure hose. Ensure that the connector is firmly fastened (but do not over tighten).

See picture 3.



picture 3

Connecting the water supply

1. Screw the threaded male hose connector onto the water supply connector. Ensure that the connector is firmly fastened (but do not over tighten).

See picture 3.

2. Connect the female connector of your garden hose onto the male connector of your high pressure hose.

See picture 3.

Note: The minimum length of supply hose (not included) advised for maximum user convenience is 6 metres with a diameter of 12.5mm(1/2") to avoid back pressure and any associated potential damage to your high pressure cleaner.

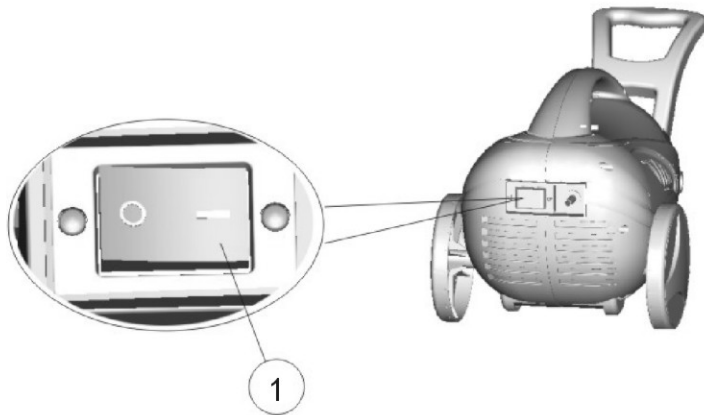
OPERATION INSTRUCTION

Instructions for use

1. Fully open the water mains tap- Do not at this switch on your high pressure cleaner.
2. Never operate your high pressure cleaner without the water supply switched on.
3. Hold the trigger of the pistol grip until all the air has been expelled from the high pressure cleaner and the water starts to flow. As soon as the water starts flowing out of the nozzle, release the trigger. You have now primed your high pressure cleaner with water.
4. The high pressure cleaner can now be switched on.

Switching On and Off

1. Ensure that the main switch is in the "O" position.
 2. To switch the high pressure cleaner on, set the —/O Switch to "—".
 3. To switch the high pressure cleaner off, set the —/O Switch to "O".
- See picture 4.



picture 4

ATTENTION

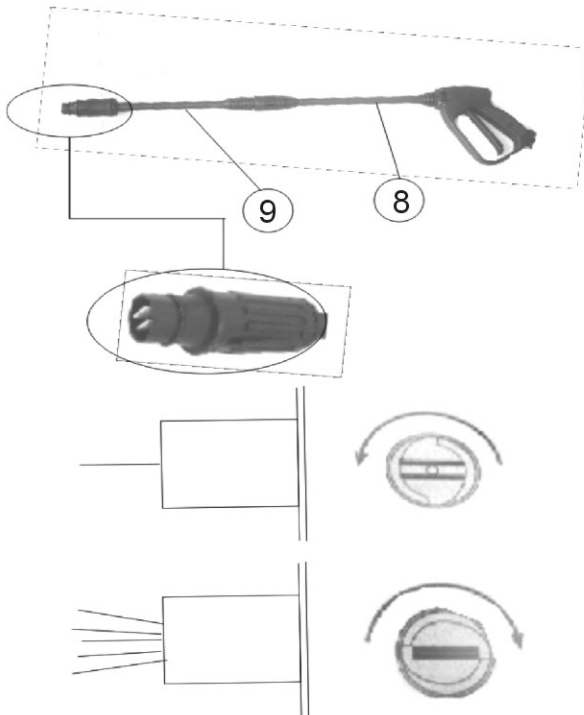
In the event of a break in use longer than 2 minutes, ensure that you switch the high pressure cleaner off. If left longer than this time the water in the system will heat up and could cause severe damage to the pump.

4. In the event of the motor overheating, the high pressure cleaner will automatically switch itself off. If this happens switch off the high pressure cleaner and wait 5 to 10 minutes before switching it on again. If the problem persists then please contact the help line.

Operating your high pressure cleaner

1. Your spray lance has two main settings. These setting can be varied by turning the fitting on the end of nozzle attachment fitted to the end of the lance.
2. Turn the fitting anti-clockwise for a pointed jet (marked stream) or turn the nozzle clockwise for a flat jet (marked fan).

See picture 5.



picture 5

3. Always ensure that the trigger is closed and the high pressure cleaner is switched off before changing the nozzle settings.

ATTENTION: When using your high pressure cleaner, the recommended working distance between the nozzle and the object or surface to be cleaner is 30cm.

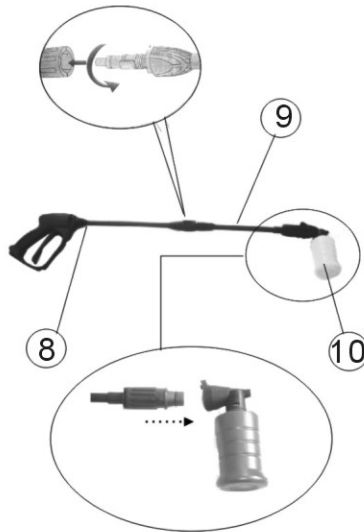
4. Aim the lance towards the object to be cleaned making sure the recommended working distance is used for reference. Squeeze the lance trigger until the water starts flowing, then switch on the high pressure cleaner by activating the —/O switch.

See picture 5.

Using the detergent bottle

1. Ensure that the high pressure cleaner is switched off.
2. Remove the nozzle attachment- if fitted. Fasten the lance onto the detergent bottle (rotating clockwise until it locks in place).

See picture 6.



picture 6

CAUTION:

Ensure that both parts are firmly connected together otherwise the nozzle could fly off the lance and cause a hazard.

3. Unscrew the detergent bottle and fill with the required detergent (ensure that you follow the manufacture's instructions for use).

See picture 6.

WARNING:

This appliance has been designed for use with cleaning agent supplier or recommended by the manufacturer. The use of other cleaning agents or chemicals may adversely affect

the safety of the appliance.

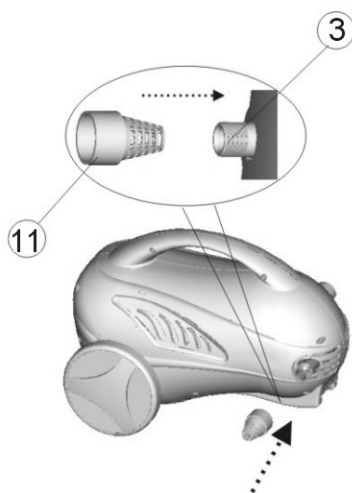
4. Switch on the high pressure cleaner and the low pressure water supply will begin to fill the bottle and produce a soapy spray.
5. To rinse the detergent bottle off, re-attach the nozzle attachment and use the water spray.

CARE & MAINTENANCE

We strongly recommend routine maintenance of the following:

1. Nozzle: Visually check to see if the nozzle is free of grit or dirt. Carefully remove any dirt using the cleaning tool provided. Then rinse from the outside with clean water.
2. Water connector: After use, carefully remove the inlet filter from the water connector with flat nosed pliers and check that there are no obstructions- if any are present then rinse and clean the filter.

See picture 7.



picture 7

IMPORTANT:

Remember frost will damage your high pressure cleaner if it has not been completely emptied of water after use. Always store in an area without frost, frost damage is not covered by the warranty.

WARNING:

If the supply cord is damaged, it must be replaced by the manufacturer, its service agent or similarly qualified persons in order to avoid a hazard.

PROBLEM SOLVING

| PROBLEMS | POSSIBLE CAUSE | CORRECTION |
|---|--|--|
| Machine does not start | <ul style="list-style-type: none"> -Plug not connected -Defective socket -Fuse blown -Defective extension cable -Wrong main voltage | <ul style="list-style-type: none"> -Connect plug -Try another socket -Change the fuse -Try without extension cable -Check that the main voltage corresponds to the specification of the machine |
| | <ul style="list-style-type: none"> -Not switched on -RCD (if used) tripped | <ul style="list-style-type: none"> -Switch on -Reset RCD |
| Pump stops | <ul style="list-style-type: none"> -Fuse blown -Overheating due to poor water supply | <ul style="list-style-type: none"> -Change the fuse and check the length of extension cable -Check the inlet water flow rate hose should fill a 10 litre bucket in a minute |
| Strong pressure fluctuations | -Nozzle partly blocked | -Clean dirt from nozzle hole with needle and rinse from the front |
| Machine does not reach Operating pressure | <ul style="list-style-type: none"> -Nozzle blocked/worn out -Inadequate main water -Inlet hose squeezed -Water filter clogged -Inlet hose blocked | <ul style="list-style-type: none"> -Clean/replace nozzle -Check inlet water flow rate -Straighten out hose -Clean filter -Check hose for leaks or blockages |
| Lance trigger will not operate | -Safety catch on | -Release safety catch |



Waste electrical products should not be disposed of with household waste. Please recycle where facilities exist. Check with your Local Authority or retailer for recycling advice.